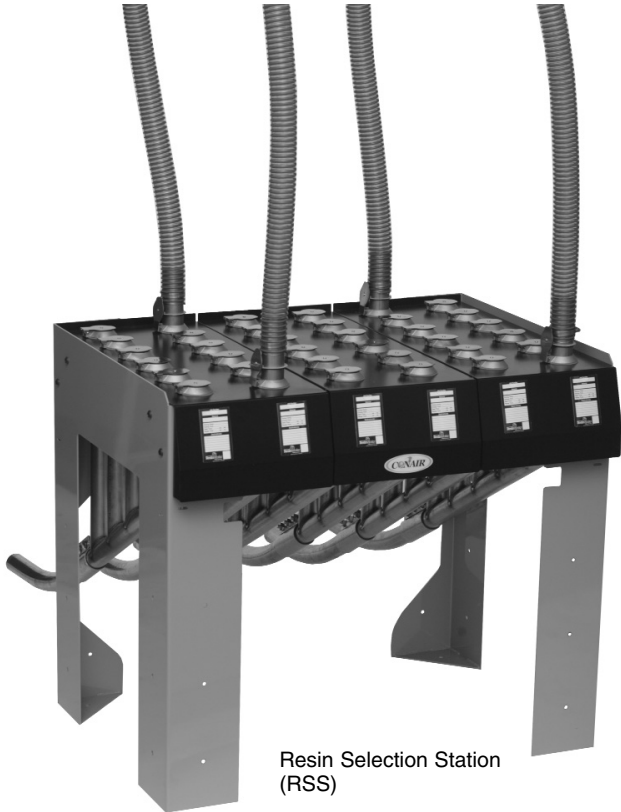


RESIN SELECTION STATION



Resin Selection Station (RSS)

**EXPANDABLE
MANIFOLD
SYSTEM FOR
MULTIPLE LINES**

Conair table top fantails are ideally suited for central drying and distribution systems that require conveying multiple materials to multiple destinations.

The table top station can be placed anywhere between the material sources and destinations. The modular design provides a variety of configurations for flexibility and expansion.

Push-fit connectors make changing materials fast and easy. Simply purge the line to assure it is clean and primed for the next conveying cycle, then move the connector to the desired material source line.

CONVEY FROM MULTIPLE SOURCES TO MULTIPLE DESTINATIONS



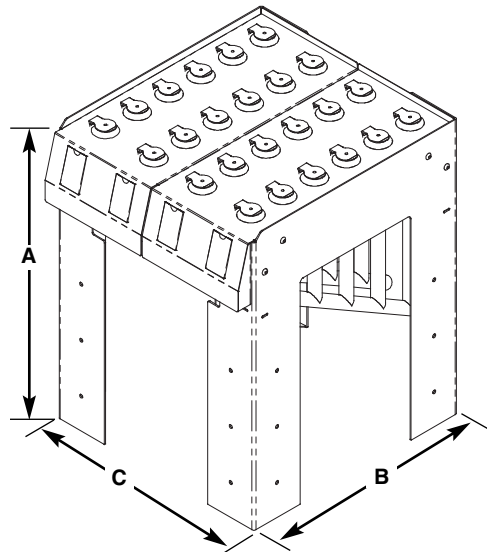
NEW

Push-fit connector design allows easy insertion of the material lines into the Resin Selection Station. Quick release lids allow for fast, simple removal.

- **Expandable to fit your needs**
Modular components provide convenient expansion and a variety of configurations. You can choose the best combination of line sizes, manifolds and connectors to suit your application.
- **Easy to use**
Simply move your material line hose from one connector to another to change material destinations.
- **Durable construction**
Rugged construction ensures long life. Material contact points are non-ferrous to prevent contamination and require minimal maintenance.
- **Ergonomic design**
Convenient tabletop design gives you easy access to every connection and promotes complete material line purging.



RESIN SELECTION STATION



FANTAIL MODELS	RSS150	RSS175	RSS200	RSS225	RSS250	RSS300	RSS400
Performance characteristics							
Line size inches (mm)	1.5 {38.1}	1.75 {44.5}	2.0 {50.8}	2.25 {57.2}	2.5 {63.5}	3.0 {76.2}	4.0 {101.6}
Weight lb {kg}*							
Installed	170 {77}	170 {77}	230 {104}	230 {104}	230 {104}	320 {145}	320 {145}
Shipping	240 {109}	240 {109}	300 {136}	300 {136}	300 {136}	390 {177}	390 {177}

MOUNTING OPTIONS	Small Frame	Medium Frame	Large Frame
Maximum number of fantails			
2, 3, 4, 5 or 6 positions per fantail	up to 2	up to 4	up to 6
Dimensions inches {cm}			
A - Height	42.12 {107.0}	42.12 {107.0}	42.12 {107.0}
B - Depth	35.87 {91.1}	35.87 {91.1}	35.87 {91.1}
C - Width	16.37 {41.58}	32.37 {82.2}	48.62 {123.5}

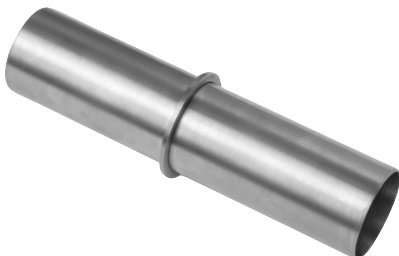
SPECIFICATION NOTES:

* Weights are based on using the maximum number of selector plates and connectors.

These tables define standard configurations only.

Specifications can change without notice. Contact a Conair representative for the most current information.

CONNECTOR



Push-fit Tube Connectors

Tubes are stainless steel to prevent material contamination. Attach flexible hose to the tube ends using hose clamps.