

We are proud of the kind of company Conair is today. But we know that all our efforts can only be measured and valued according to how well they **meet the needs of you, our valued customer**. If you are currently a Conair customer, or have been in the past, thank you. Please continue to challenge us to help you be **more profitable**. And if you have never done business with Conair, put us to the test. Measure Conair against your best suppliers. Find out for yourself our drive to understand **what you need**. Our **ability to deliver**. Our **eagerness to earn your respect** and **win your business**.

Contact us today. **Challenge us**. Discover new ideas ready to work harder for your business today.

World Headquarters:
One Conair Drive
Pittsburgh, PA 15202
412-312-6000
www.conairgroup.com



Conair China
Shanghai
86-21-6760-1870

Conair East Asia
Taipei
886-2-8647-2088

Conair Europe
Slough, UK
44-(0)-1753-215100

Conair India
Nu-Vu Conair
2003, Phase IV, GIDC
Vatva, Ahmedabad-382 445
India
91-(793)-2985993

Conair Kawata
455 Allegheny Blvd.
Franklin, PA 16323
800-289-2662

Conair Mexicana
Monterrey, MX
52-818-327-1238

Conair Pacific
Singapore
63-2-456-6808

Conair Pacific Equipment
Metro Manila, Philippines
63-2-456-6808

NEW IDEAS WORKING HARDER FOR YOU



Working directly with you at your processing operation, listening to your concerns, understanding your business drivers, and helping you work smarter, leaner, better.



WHO WE ARE

You need a supplier who understands that your purchase order is only the beginning of your relationship and not the end. Who knows that world-class pricing doesn't mean a thing if the equipment isn't delivered, installed and operating properly and on-time. That service attention, if it is ever required, is needed now and not tomorrow.

You need a supplier/partner who is **100% committed to your success** and structured to deliver on that promise. A partner who listens to you and understands the intense competition you face every day. Who recognizes the need to find new answers to old questions. Where over 50 years of experience combined with youthful creativity work to break down barriers to innovation and harness technology to deliver to you a meaningful, bottom line benefit.

At Conair, we know what matters to you. We are customer-focused. **Global. Responsive. Innovative. Resourceful. Respectful.** And we are determined to earn your trust, win your business and help to ensure your success.



IMPORTANT FACTS:

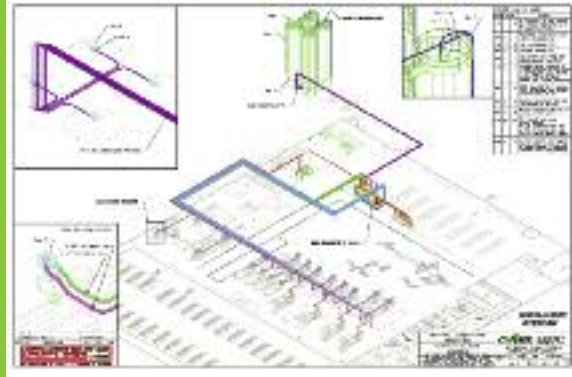
- Founded in 1956
- 500 employees
- Seven separate product lines, over 450 individual products
- Installs 150 engineered systems every year globally
- Global offices for 40 years
- Installations across North America and around the world
- One company with the breadth of line, the depth of knowledge and the range of resources to give you TOTAL solutions

WHERE WE ARE:

- Conair World Headquarters – Pittsburgh, PA USA
- Conair China – Shanghai, China
- Conair East Asia – Taipei, Taiwan
- Conair Europe – Slough, England, UK
- Conair-Kawata – USA
- Conair Mexicana – Monterrey, MX
- Conair Pacific – Singapore
- Conair Pacific Equipment – Manila, Philippines



The job is simple: understand what really goes on in your plant and work with you to do it better.



You get total ease-of-mind with the ground-up, full operational warranty from Conair.



WHAT WE DO

When you need a system solution, whether it's a minor plant expansion or a total ground-up facility, you need more than an equipment supplier. You need to work with a multi-disciplinary team of professionals with the wide range of experience and specialized knowledge required to **understand your business objectives** from beginning to end.

Installing over 150 systems each year, we have more experience than anyone. But beyond that, Conair is the only company with the organizational depth, process expertise and defined procedures to get you up, running and making money – **on time and on budget.**



You get real-life plastics-processing solutions to help you reduce labor costs, energy costs, and material costs.

Our Engineered Solutions Team approach to systems projects brings together dozens of different people from disciplines normally found in many different departments:

- Application engineering
- Design
- Labor – Water
- Computer-aided drafting
- Documentation
- Start-up
- Project management
- Purchasing
- Training
- Manufacturing
- On-site management
- Water systems
- Material handling systems
- Labor – Material Handling
- Post-sale support



INDUSTRIES we serve:

- | | | | |
|--------------|-------------------|------------|-----------------|
| Medical | Packaging | Automotive | Appliance |
| Electronics | Caps and closures | Fiber | Fencing |
| Agricultural | Construction | Containers | Toys |
| Housewares | Wire and cable | Hardware | Lawn and garden |



GLOBAL BECAUSE YOU ARE

Today it's trendy to be labeled a "global" supplier. And yet, becoming a truly international company is not something that happens overnight. It takes time to build relationships and become productive, to learn about new markets and new cultures.

Conair has been on the ground in Europe since 1974. We've had a substantial presence in Latin America since 1972, and in Asia since 1979.

Whether you are just getting established or are trying to build your business, Conair is there to serve you: in Indiana or India; Frankfurt, Germany, or Frankfurt, Kentucky; Guaymas, Mexico, or Guangzhou, China.



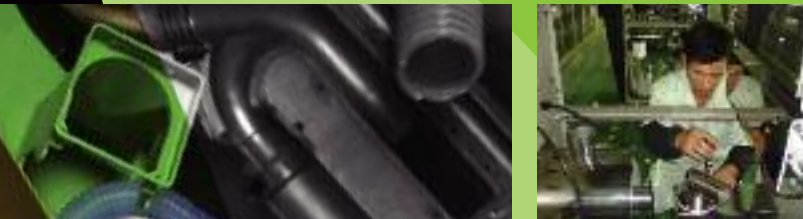
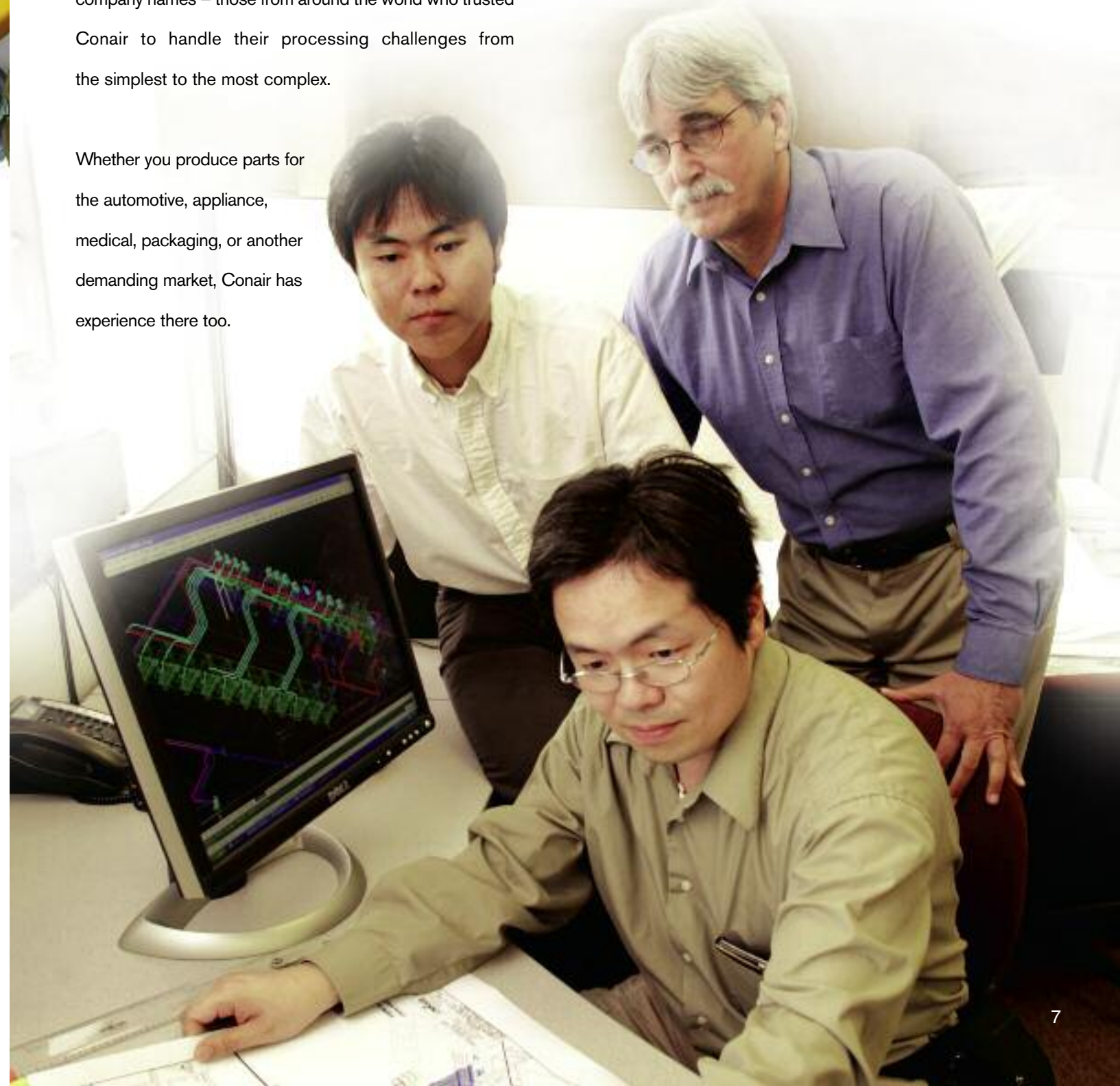
EXPERIENCE THAT COUNTS

Your name may be hanging on the wall at Conair headquarters. That's because the "Great Wall of Customers" adorns our lobby, displaying over 10,000 company names – those from around the world who trusted Conair to handle their processing challenges from the simplest to the most complex.

Whether you produce parts for the automotive, appliance, medical, packaging, or another demanding market, Conair has experience there too.

processes we serve:

- Injection Molding
- Pipe, Tubing and Profile Extrusion
- Blow Molding
- Compounding
- Film and Sheet Extrusion
- Thermoforming
- Recycling



HEAT TRANSFER

- Thermolator® Temperature Control Units
- Portable Chillers
- Cooling Towers
- Central Chillers
- Pump Tanks
- Strainers and Filters
- Tower Heat Exchanger



GRANULATION

- Beside-the-Machine Granulators
- Central Granulators
- Shredders
- Conveyors
- Evacuation Systems
- Elutriation Systems
- Fines Separation Equipment
- Blower Packages
- Negative Pressure System



DOWNSTREAM EXTRUSION

- Vacuum Sizing Tanks with Standard Air/Water Separation
- Cooling/Spray Tanks
- Belted and Cleated Pullers
- Servo Rotary Knife Cutters and Traveling Saws
- Takeaway Conveyor



AUTOMATION

- Sprue Pickers
- Beam Robots
- Six-axis articulated Arm Robots
- End-of-Arm Tooling
- Feeder Bowls
- Conveyors
- Shuttle Tables
- Degation Stations
- Cooling and Inspecting Stations
- Clip Assembly
- Deflashing



MATERIAL STORAGE

- Silos
- Stationary and Mobile Surge Bins
- Gaylord Tilters
- Rail-Car and Truck Unloading Systems
- Bulk Conveying Systems



CONVEYING

- Self-Contained Vacuum Loaders
- Compressed Air Material Loaders
- Central Vacuum Receivers
- Conveying System Controls
- Vacuum Pumps
- Material Distribution Systems
- Material Line Valves



DRYING

- Electric Dryers - Central and Mobile
- Gas-fired Dryers
- Compressed Air Dryers
- Hot Air Dryers
- Drying Hoppers
- ResinWorks - Central Drying System
- Crystallizer
- Drying Monitor
- EnergySmart™ PET Drying System



BLENDING

- Gravimetric Blenders - Standard and High Heat models
- Throughput Applications
- Gravimetric Feeders
- Volumetric Feeders

WHAT WE MAKE

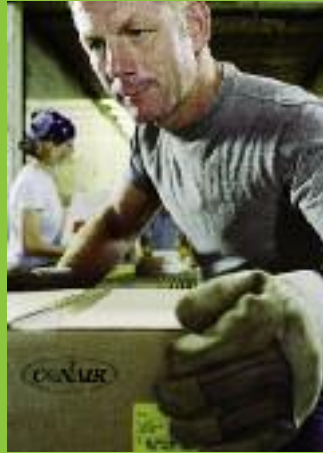
Conair supplies auxiliary equipment that solves problems, saves energy, cuts waste and is easy to use. While engineers at other suppliers are sitting at their computers trying to figure out how they can squeeze the latest electronic gimmick into their "new" product, Conair designers are in the field asking about where you feel the most pain.

Listening to the challenges you face. Understanding your frustration. This is where our inspiration comes from.

In fact, in recent years Conair has virtually **reinvented** some of the most basic, workhorse products to give you what you need most. Loaders with unique angled hoppers that are simpler and easier to use and clean. A totally enclosed blender housing that prevents pellet leaks, while the new control system eliminates confusion and simplifies operation. New dryer designs that are more compact, more energy efficient and easier to operate and maintain.

In each case, we've developed product that is demonstrably different - measurably better than what has existed before. Products that spring from a **thorough understanding** of what matters to you.

The product you get from Conair is produced with consistent quality, consistent aesthetics, maximum ruggedness, and maximum reliability.



TOTAL CUSTOMER support

Providing you with the most **rugged, reliable and value-priced auxiliary equipment** and plant-wide systems isn't enough. We know that your continued success depends on getting spare parts and technical service when you need them. That's why Conair is committed to giving you the highest level of aftermarket support in the industry.

Only Conair is set up to **respond quickly** to a call for technical assistance or a spare part any time of the day or night, anywhere in the world.

If your situation requires an in-plant service visit, it will be handled by one of over 75 certified, global service technicians directly employed by Conair. And, in order to make sure you get the **fastest possible service** wherever you are, we also employ strategically located factory-trained contract service technicians.

HOW we support you:

- 24/7 parts and service support
- Unparalleled expertise
- Total training
- Preventative maintenance programs
- Useful parts and service information always available at www.conairgroup.com

